



IW-PE715

GPU Workstation

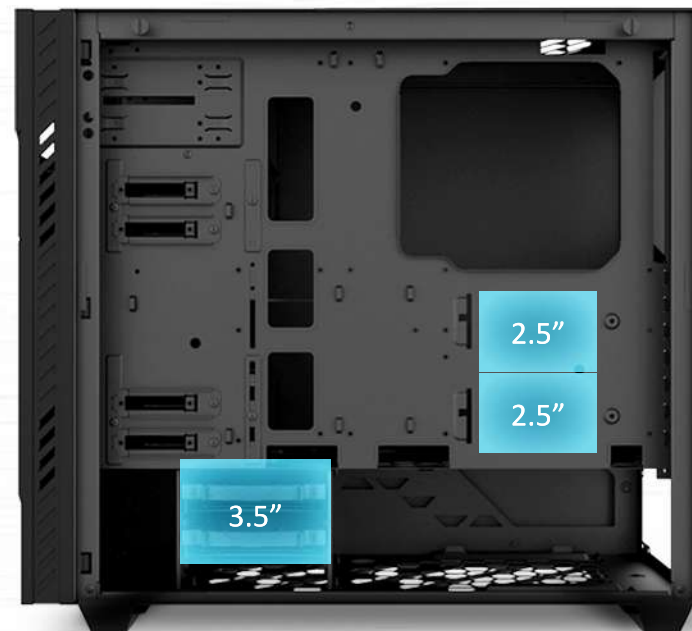
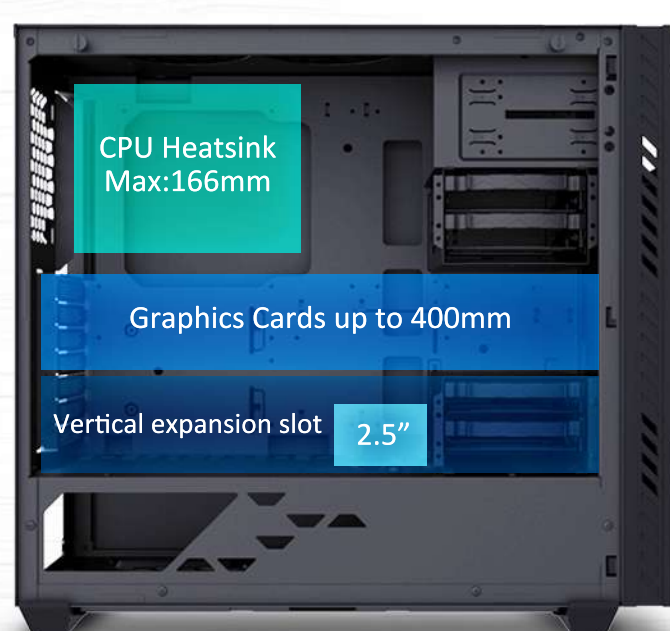
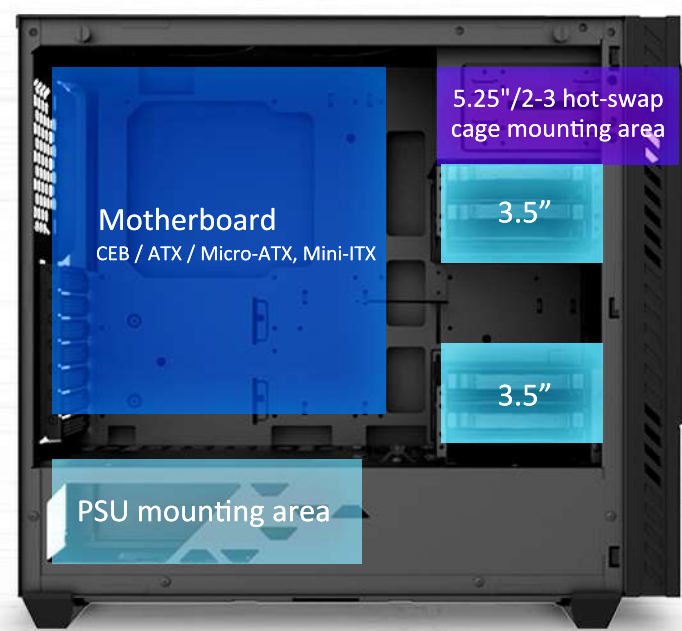
Designed for Content Creators

Build a personal/professional studio with the IW-PE715 GPU workstation chassis. Accelerate your workflow with a purpose-built design that is ideal for 2D/3D content creation, CAD/CAM, simulation, rendering, machine learning, data science, and much more.



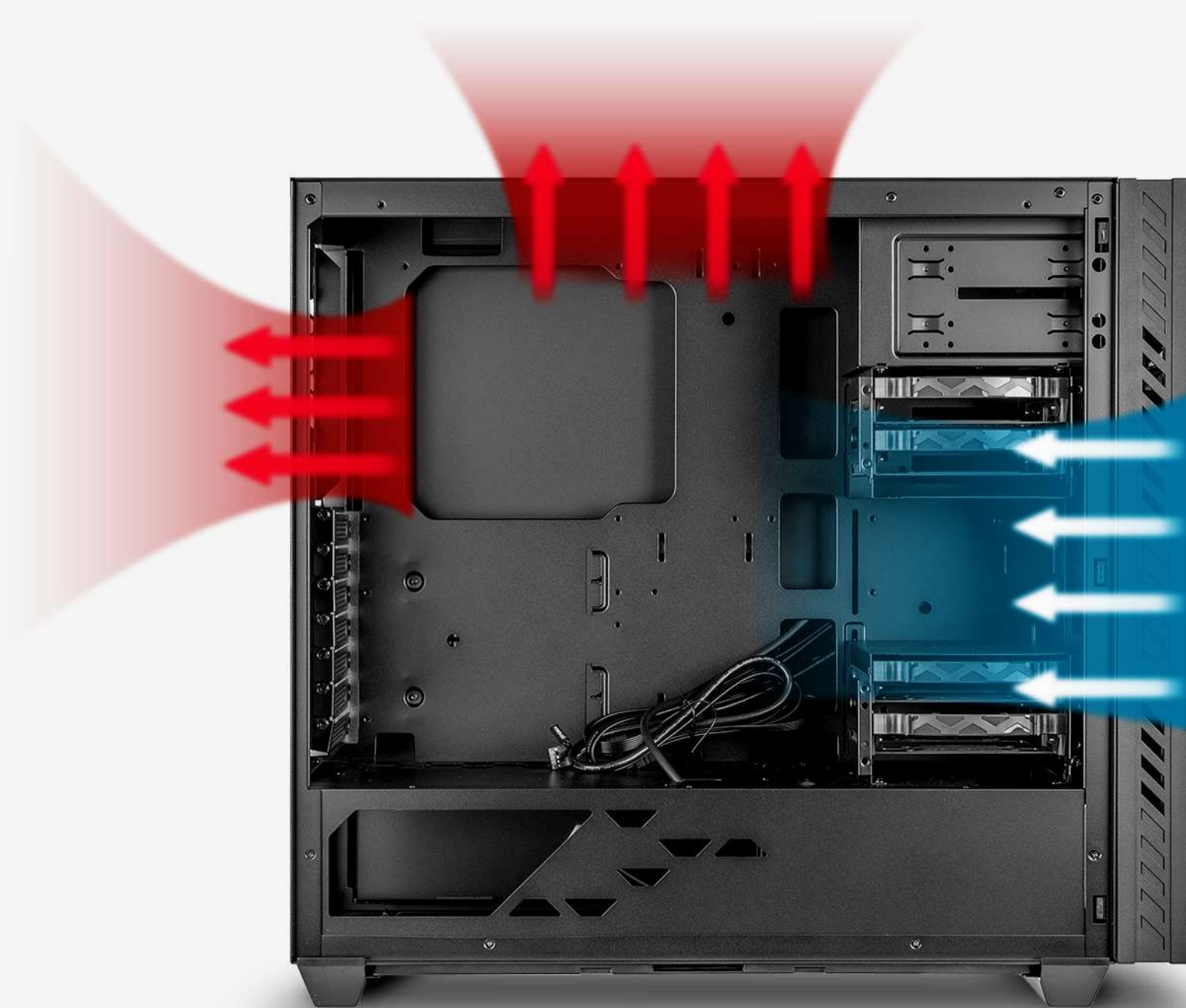
Highly Expandable Structures

The IW-PE715 supports up to six 3.5" HDDs and three 2.5" SSDs, plus two 5.25" drive bays that can be used for optical drive devices or up to three front-accessible hot-swap HDD bays (with InWin's optional storage kits); offering quick and convenient transfer of ultra-large files or off-site backup. Multiple graphics cards of up to 400mm in length and can easily fit with a wide selection of PS2 or CRPS choices.

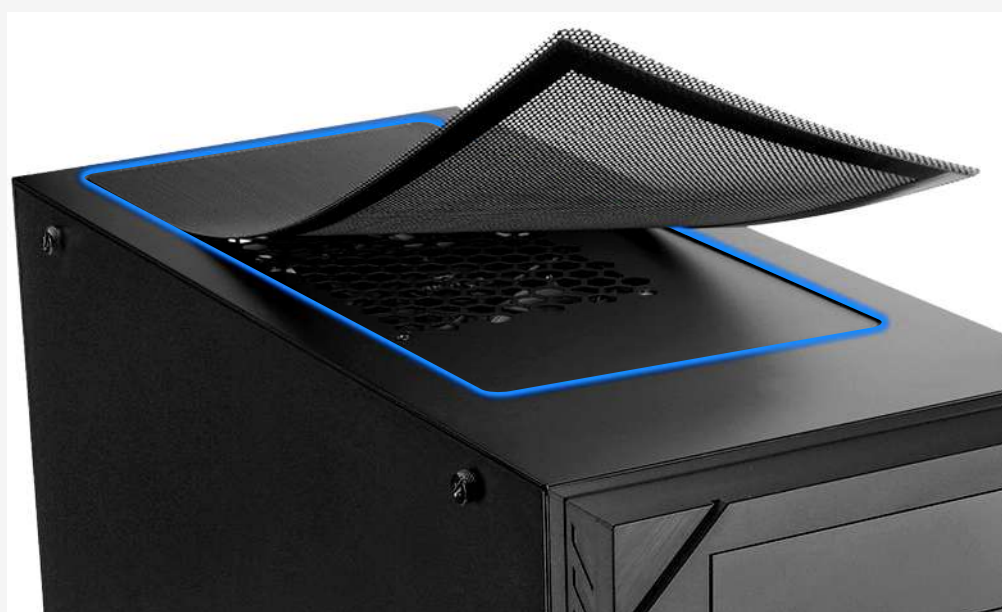


Efficient Thermal Performance

The IW-PE715 incorporates five fan mount locations and support for up to 240mm radiators for AIO or liquid-cooling, there's also ample build flexibility via large air-cooling heatsinks up to 166mm tall. The IW-PE715 provides comprehensive cooling capability to meet our desired high-performance system requirements.



Optional Magnetic Top Cover



Standard Magnetic Dust Filter

Specifications

Materials	SECC, ABS
M/B Compatibility	Supports CEB, ATX, Micro-ATX, Mini-ITX
Expansion Slots	PCI-E x 7 Vertical PCI-E x 2
Maximum Compatibility	<ul style="list-style-type: none"> VGA card length: 400mm (maximum) (Length up to 7 x 400mm slots when removing 4 x 3.5" HDD cages) VGA card width: 170mm (maximum) CPU heatsink height: 166mm (maximum)
I/O Ports	1 x USB 3.1 Gen 2 Type-C 2 x USB 3.0 HD Audio
External Drive Bays	2 x 5.25" or hot-swap drive cage (3 x 3.5")
Internal Drive Bays	6 x 3.5" 2 x 2.5" (2 pre-installed, max. up to 3)
Thermal Solution Compatibility	<ul style="list-style-type: none"> Front: 2 x 120mm fan or 240mm radiator (must remove 3.5" drive cages) Top: 2 x 120mm fan (only one top fan can be mounted if using the optional InWin storage kit) Rear: 1 x 120mm fan / 120mm radiator
Power Supply Compatibility	PS2, ATX12V (length up to 220mm) CRPS up to 1600W 80 Plus Platinum (require to remove bottom 3.5" drive cage)
Product Dimensions with Button & Stand (H x W x D)	470 x 230 x 518.5mm 18.5" x 9.6" x 20.3"
Package Dimensions (H x W x D)	340 x 597 x 575mm 13.4" x 23.5" x 26.4"
Net Weight	7.6 Kg, 16.25lb
Gross Weight	9.6 Kg, 24.5lb

* The actual product is subject to change without prior notice. In Win Development Inc. reserves the right to make any final modifications.
* The above image is for reference only. All hardware components and optional parts are not included.

Optional Items

Item	Support
Optional Magnetic Top Cover	1
PS2, ATX PSU	1
80 Plus Platinum CRPS up to 1600W and mounting kit (AC input 100-127V, total power 1000W max. / AC input 200-240V, total power 1600W max.)	1
120mm fan	Max. 5
2-in-3 2.5"/3.5" SAS/SATA III storage kit	1
2.5" SSD bracket	Max. 3
PCI-E riser cable (PCI-E 3.0 x16)	1

* Optional items are available upon request for an additional fee.



518.5mm

230mm